

Power BI bij ABN AMRO

Bernard Beeftink & Ben de Jong



A big thank you to our *amazing* partners

sogeti
Part of Capgemini

webdashboard

plainwater
de kracht van heldere data

iq̄bs

**KASPAROV
FINANCE & BI**

Kimura

S Sifters

creates.

valcon

Tabular Editor

**GET
RESPONSIVE**

**9Δ nine
altitudes**

**ONE
PORTAL**

ilionx
experts in eenvoud

DATAKINGDOM

**POWERBI WHITE LABEL
.COM**

**DE DATA
GENERATIE**

**THE
DATA
COOKS**

mountdata
guide to impact

sopra steria

Boom Insights
DATA-DRIVEN DECISION MAKING

dexs

dashData
power to your people

raedt-BI

easydash

MINOVA
Management Information Consulting

SIGNON
ICT TRAININGEN +

**ANOTHER
DIMENSION**
YOUR PORTAL TO DATA CLARITY

Fabri Code </>

**Azurro
Finance**

**Power BI
Connector**
by DAVISTA

Quanto
collective analytics

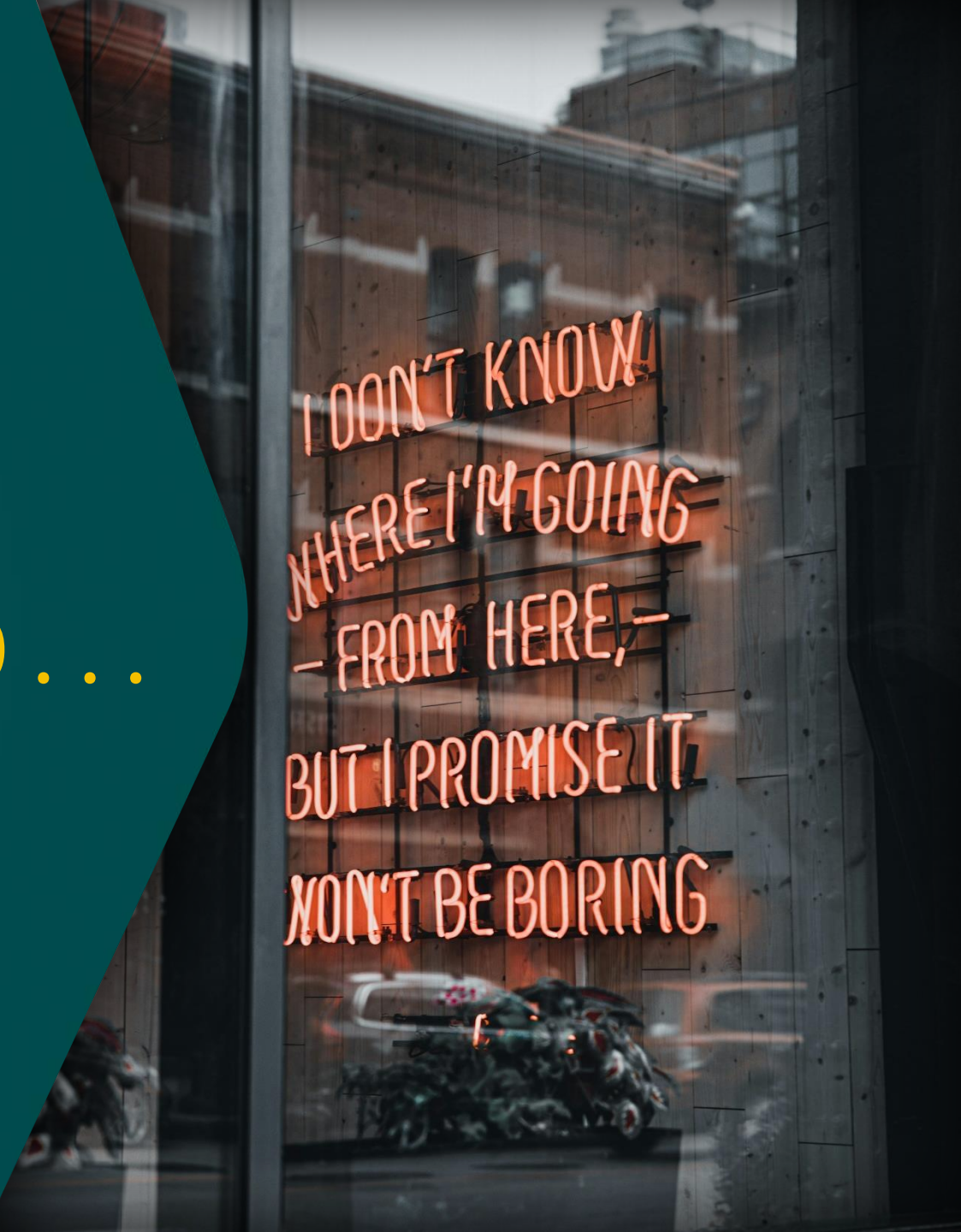
Thanks

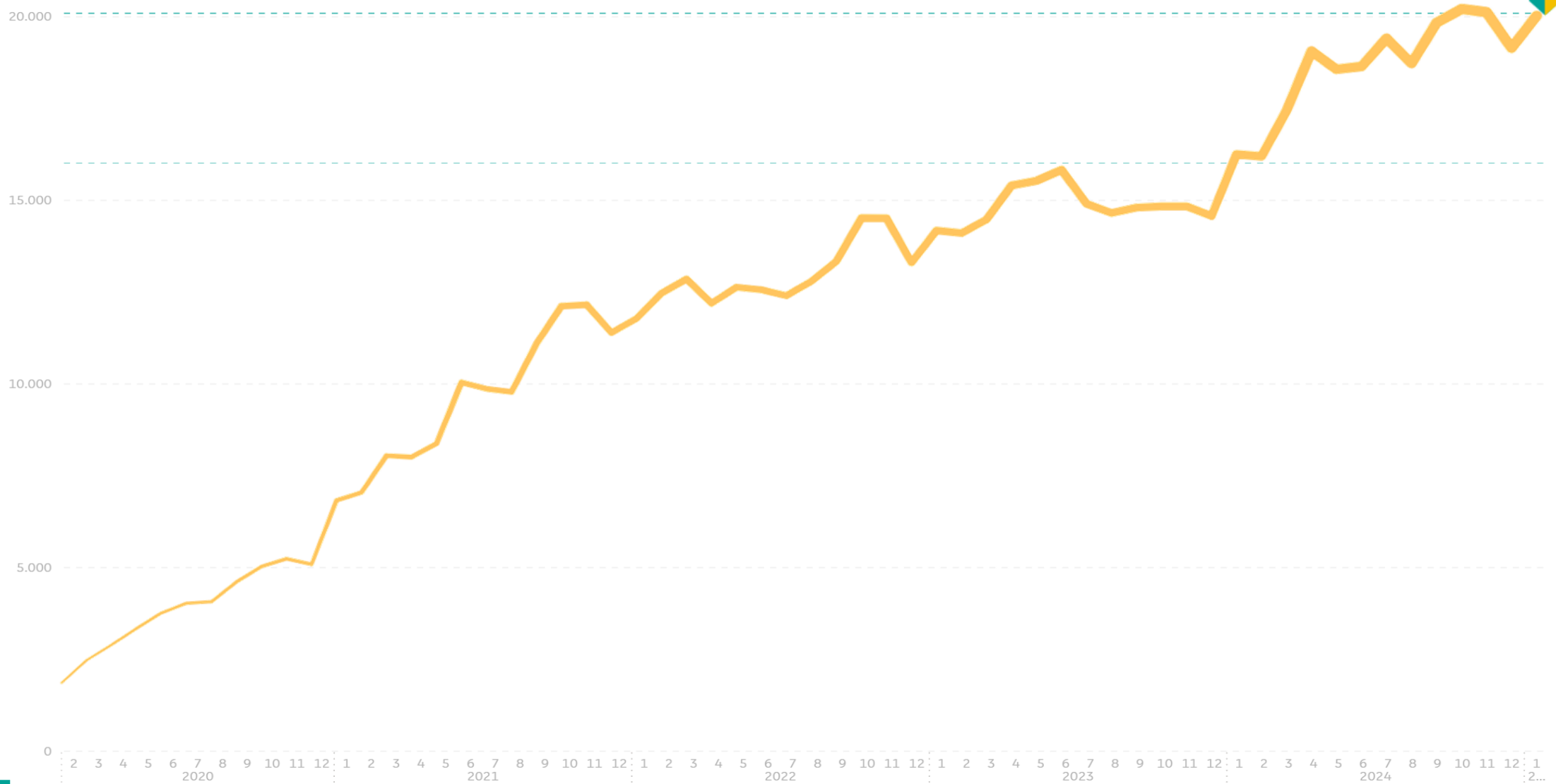
BI Enabling Block

Power BI bij ABN AMRO

Een reis van 0 naar 20.000 . . .

8 maart 2025





Agenda

1 **Introductie**
Wie staan er voor jullie?

2 **Waarom Power BI?**
Waarom zijn we bij ABN AMRO overgegaan naar Power BI?

3 **Trainen van onze gebruikers**
Dit was een van de eerste punten waar we mee aan de slag gingen

4 **Onze hulpmiddelen**
Om onze gebruikers te ondersteunen hebben we een aantal hulpmiddelen ontwikkeld

5 **De lessen die wij hebben geleerd**
Dit zijn de drie lessen die wij graag met jullie willen delen

6 **Q&A**
Zijn er nog vragen?



Ben

Functie

Data Analyst bij Sustainability Centre of Excellence in het ESG Data-team

Achtergrond

Sinds 2000 werk ik bij ABN AMRO in verschillende rollen tussen de business en IT in. In 2014 heb ik mijn passie gevonden in het visualiseren van data, met dank aan Stephen Few en Andy Kirk!

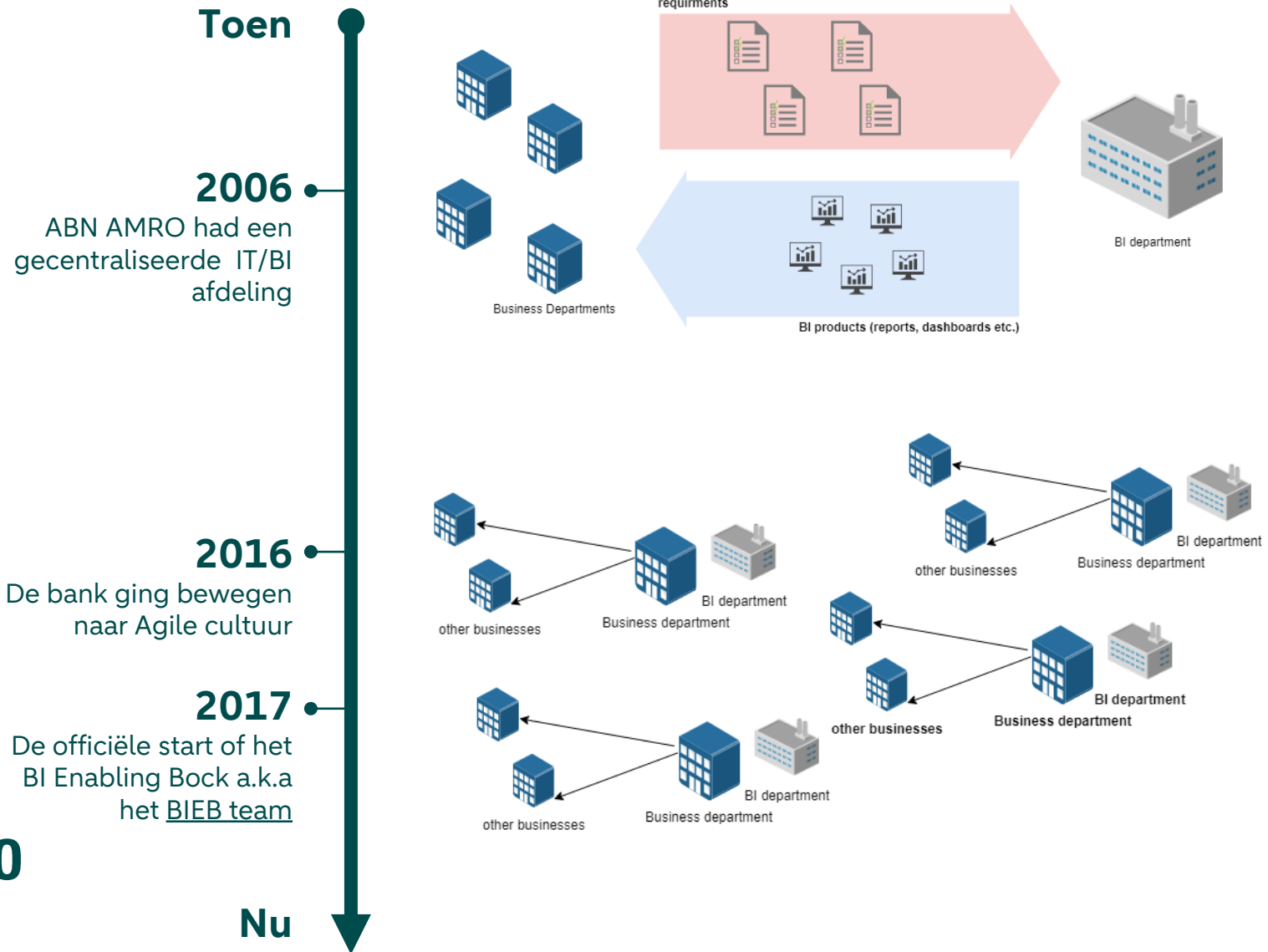
Fun fact

Ik heb ook een eigen bedrijf (ClearDataViz) en geef data visualisatie/data geletterdheid-trainingen en was co-host voor de podcast Data Voorstellingen. Fotograferen vind ik erg leuk om te doen.

2

Waarom Power BI?

Waar komen we vandaan?



BI Tool Vergelijking

Deze elementen hebben we in deze vergelijking overwogen



Kostenperspectief

- Licentiekosten
- Hardware en onderhoudskosten
- Additionele kosten



Onderhoudsperspectief

- Installatie, Implementatie, Beveiliging
- Functioneel Onderhoud & Administratie
- Lifecyclebeheer (hotfixes, upgrades, nieuwe functies)



Functioneel perspectief

- Samenwerken in het bedrijf
- Online community
- Aanvullende opties (bijvoorbeeld custom visuals)

4 Tools



Grondig opruimen

"We moeten **altijd** alles verwijderen wat niet langer aan de zakelijke behoeften voldoet."

R

eport 

Maak gebruik van statistische informatie om rapporten te maken om het gebruik van de omgeving bij te houden.

A

alyze 

Analyseer het verder, zoals Report is de afgelopen 6 maanden niet uitgevoerd, zoek inactieve gebruikers, lijst met inactieve rapporten.

C

lean 

Opruimen van inactieve MicroStrategy-rapporten om ons BI-omgeving op te schonen.

E

nd 

Wanneer alle vereiste rapporten zijn opgebouwd in een nieuwe Power BI-omgeving, is dit de eindstatus voor de legacy-toepassing

Power BI was gelijk voor iedereen beschikbaar



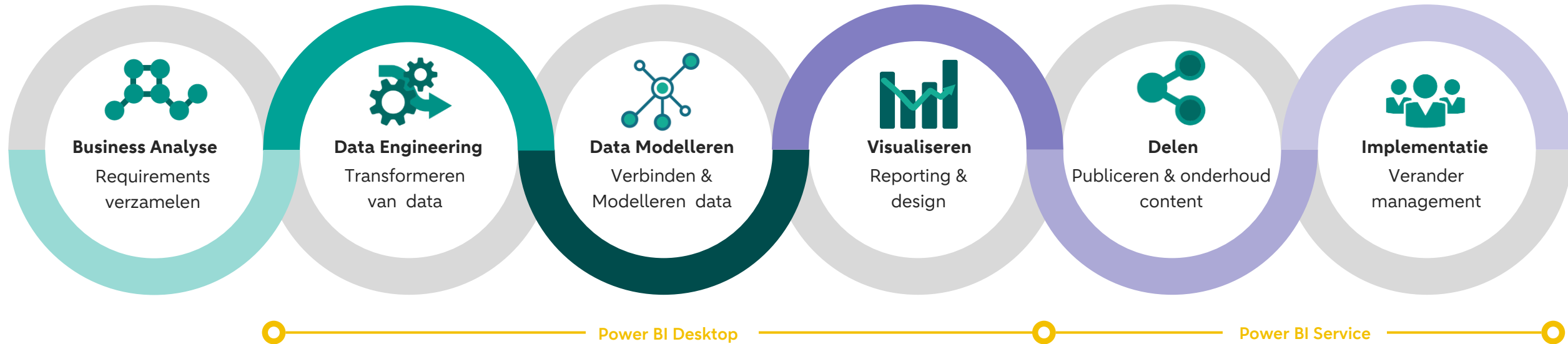
- PBI Desktop “gepackaged”
- Power BI Workspaces worden centraal uitgerold
- Power BI Enterprise Gateway centraal beschikbaar gesteld.
- DAX-Studio en Tabular-Editor beschikbaar gemaakt



3

Trainen van onze gebruikers

Zes Power BI skills



Vier groepen Power BI gebruikers



Ready to start your Power BI journey at ABN AMRO?

- How to Access Power BI
- Quick Reference Sheet
- What is Power BI
- What can I do with Power BI
- Where to find trainings
- How to find an Owner of a Report
- How to use the Power BI Service
- CHRTS: Which visual should I...
- BI Superstar Program
- Power BI Video Channel
- Requests
- Wanna become a data explorer



Do you want to improve, and learn the 3 steps of building your own dashboard?

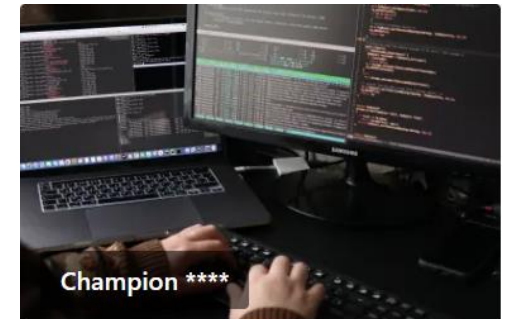
- Issue with launching Power BI...
- Where to find trainings
- Triangle/Gathering
- The Power BI Community
- Microsoft Blogs
- CHRTS: Which visual shape or...
- Power BI Video Channels
- Info on Power BI Releases
- BI Superstar Program
- Request
- Want to become a data content...

PRO User: PL 300 Certification & BIEB Awareness Test



You know how to develop a report, but now you want to share it efficiently and safe!

- How can I request a Power ...
- Share Awareness
- The BI Governance...
- BI Quality Feedback Engine
- ABN AMRO template
- CHRTS: Which visual shape ...
- Issue with launching Power ...
- Info on Deployment Pipeline
- Enterprise Gateway
- Power BI Quick Reference...
- Keeping Information...
- Row Level Security
- Requests
- BI Superstar Program
- Where to find the trainings
- Custom Visuals and...
- Endorsement Program
- Power BI Video Channels
- Power BI Email notifications...
- Using Security Groups
- Want to become a Champion



Want to Boost your Power BI skills to the next level?

- Optimize performance with DAX...
- Issue with launching Power BI...
- Target Operating Model Program
- Security reports
- Where to find Trainings
- Next Level DAX
- PowerQuery M Language
- Request DAX Studio
- BI Superstar Program
- CHRTS: Which visual shape or...
- Quick Reference Sheet
- Power BI Video Channel
- Request

Level	Data Engineering	Data Modelling	Visualising (also includes custom visuals)	Sharing
1	Connect to one data source, change a data type	Single table, not modelling skills	Can create them	Never shared.
2	More than one data source, know some cleaning steps	Can create relationship, Simple DAX aggregation skills like SUM or AVERAGE	Multiple visuals on a page without meaning	Understands how to publish a report.
3	Understands most of the basic UI functions	Basic knowledge of Dimension / Fact tables and can identify them in a model	Implement Slicers, know how to alter the look & feel of reports and visuals in meaning of UI.	How to create Workspace, Share reports.
4	Knows what "M-code" is, how to merge, append and perform more advanced UI transformations	Somewhat comfortable with simple DAX. Knows the CALCULATE function well. Can explain how the CALCULATE function works.	Build a drill-through and understand what themes are and maybe use them for colors. Has general knowledge of (Nova Silva) custom visuals	Knows how to manage workspaces, user permissions, sharing via AD groups. Understands basic admin elements
5	Advanced Query Editor, simple manipulation of connection strings	More in dept DAX calculation, Month over Month, Data tables, understands STAR Schema and types of relationships and impacts in a model	Simple Bookmarks for various needs, understand there are properties on report objects.	Has experience configuring Administrative features in the tenant. Knows how to install and manage a gateway. Basic levels of understanding licensing.
6	Understand the pitfalls of Query steps and have a method to transform	Proficient modelling skills, understands the basics of performance tuning, built in performance analyzer in Power BI.	Can recommend appropriate visualisations to answer business questions. Has example of published materials that explain how to choose a visual (CHRTS Assistant). Proficient at all way to manipulate look & feel in meaning of UX.	Understands the larger Azure ecosystem and how Power BI sits in that space. Can make recommendations on gateways, user management, and has a basic understanding of how to deploy Power BI in an organization.
7	Have a connected to and paged through API's. Understand all UI functions and are comfortable manipulating M in Advanced Editor	Can refactor and re-shape data to create an easy-to-understand model. Proficient in core concepts, and performance tuning. Knows about external tools to aid in performance tuning.	Can create and utilize custom themes. Proficient at creating many various page and visual interactions using bookmarks, buttons, layering.	Understand the different ways in which Power BI can/should be implemented throughout the organization. Has strategies and methods to enable business. Understands basic of how to monitor the Power BI ecosystem.
8	Regular use of Parameters, functions, and is familiar writing some M	Lives in Models & DAX. Knows how to use multiple models to create models, deep understanding of DAX, and can performance tune medium sized models. You've used the XMLA endpoint and understand incremental refresh.	Profound methodology for report page layout, choosing appropriate locations for objects with intention. Utilizes fonts, colors to clearly design easily consumable reports.	Understands the different ways in which Power BI can/should be implemented throughout an organisation
9	Uses the Advanced Query modal to write M so than using UI	Experience and comfortable using DAX Studio, Tabelar Editor and understands the core fundamentals to adjust and correct performance problems. Deals with and manage extremely large models. Advance use of Large models, incremental refresh, calculation groups and aggregation tables.	Displays intentional design choices and methods for all visualisations and report layout. Creates reports that are easy to consume by end users with little effort. Fully support RLS in shared reports.	Full proficiency in how to administer Power BI in an organization, how to troubleshoot gateways and apply licenses within the organization. Can provide insights on licenses policies and cost optimize Power BI environment.
10	Is proficient in understanding all the major connection methods, is the M Master!	Master of "All".	Master of Storytelling, Report Design, Messaging, and end user usage. Has examples of public works that show and demonstrate these skills. Possibly build your resume as a report.	Master of All – Full end-to-end strategies for company wide implementations. Understands the methods and tools that can be used to fully monitor all activities and proactively find and triage issues. Has developed tools to monitor usage within Power BI.

The Essentials **

The Core ***

Power UP Data ****

Experience

Source: <https://powerbi.tips/2021/02/power-bi-skills-matrix/>



Power BI Learning Path | Four steps for growth

Since Power BI usage is growing fast we want to help colleagues with finding suitable training courses to improve their Power BI skills. Especially, trainings that fit the way we work with Power BI within the bank. After a market research of current training offerings, we have come to a training curriculum that covers the full scope of our Power BI users within the bank: From the moment a user lifts off and starting using the tool as a consumer, until an advanced role as a Champion.

Each role has different needs for training, aligned with the capabilities that suits them best. For every step we provide specific training modules see the table below for more information. These modules are from different providers (internally and externally) and are provided online or in a (virtual) classroom.

Power BI (for **own** use)

Power BI PRO (to **share** with others)

The Lift Off



The Core



The Essentials



Power Up Data



4

Onze hulpmiddelen

Onze hulpmiddelen

BI Governance Framework

Het doel is om onze gebruikers te helpen hen te begeleiden bij alle aspecten van de organisatie van hun BI-landschap en om te integreren met bedrijfsstandaarden.



BIEB
BUSINESS INTELLIGENCE
ENABLING BLOCK

Workspace Management

Om collega's te helpen hun werkplekken te onderhouden, om hun werkplekken vrij te houden, te besparen en...



Power BI Community

We hebben een van de grootste communities binnen de bank, op dit moment hebben we 2.250 leden. Om deze leden te ondersteunen en te helpen maken we gebruik van 12 specifieke Teams-kanalen. Een van onze meest populaire kanalen is het Power BI Walk-In-kanal.



BI Quality Feedback Engine

Voor onze makers van Power BI-inhoud is de BI Quality Feedback Engine een oplossing die onze gebruikers begeleidt met best practices en feedback om de kwaliteit van datasets en Power BI-vaardigheden te verbeteren, wat resulteert in een stabiel platform.



BI Content Cleaner

Het doel van de Content Cleaner is om onze BI-omgeving schoon en georganiseerd te houden. Daarom worden alle rapporten in de Power BI Premium Tenant op periodieke basis gescand om de inactieve inhoud te archiveren en de actieve inhoud te behouden.



CHRTS Assistant

Het helpt de gebruikers om eerst te vragen wat ze met hun gegevens willen laten zien. Als ze het weten, zal het helpen om het juiste visualisatie te gebruiken. Het geeft een aantal uitstekende opties en aanvullende informatie over hoe u dit kunt doen.





BI Governance Framework



Hold the CTRL button while selecting the different elements.

Our BI Strategy is to Increase self-service BI by making BI accessible for a broader audience without the loss of single source of fact, fit for purpose and security & compliancy.

Principles

BI quality assurance

Compliant BI

Secure BI

Single layer for all semantic models

Sustainable BI



Policies

All

Id	Policy	Risk	
		Impact	Type
POL01	Auditable access to BI artifacts	High	Security risk
POL02	BI environment access policy	Medium	Security risk
POL03	BI artifacts aligned with DSA	High	Compliance risk
POL04	Unauthorized visualizations and data leakage prevention	High	Security risk
POL05	GDPR - Protecting and Enabling privacy rights	High	Security risk
POL06	Authorized sharing and distribution policy	High	Security risk
POL07	Embedded content sharing	High	Security risk
POL08	BI artifacts should be searchable for all authorized users	Low	Quality risk
POL10	BI capabilities only consist of reading data.	High	Continuity risk
POL11	Sensitivity classification of BI artifacts	High	Security risk
POL12	Direct access to Data lakes and other Big Data capabilities is only allowed through the query layer.	Medium	Performance risk

Policy description:
There are 26 policies within your selection. Please select one policy in the list above, to see it's description.

Risk explanation:
Please select one policy in the list above, to see the explanation of the risk, if this policy is not applied.



Roles

All

Role_Name	R	A	C	I
Architect		✓	✓	✓
BI Data Modeler	✓		✓	✓
Business Data Advisor			✓	✓
Data Consumer	✓	✓		✓
Data Product Provider		✓		✓
Data User			✓	✓
Everyone			✓	✓
IT Engineer	✓		✓	✓
Legal Officer			✓	✓
Managed BI Creator	✓	✓		✓
Risk Officer			✓	✓
Self-Service BI Creator		✓		✓

Role description:
Please select a role to see it's description.

Power BI role explanation:
Please select one role in the list above, to see it's related Power BI role.



Processes

All

Id	Process
PRO02	Access the served BI applications.
PRO05	Training and certification to engage a Power BI Pro license.
PRO06	Aligning BI Artifacts with Data Sharing Agreement(s) (DSA).
PRO07	Disable uncertified custom visuals.
PRO08	Enable certified custom visuals.
PRO10	Create Premium Workspace.
PRO12	Manage Premium Workspace.
PRO14	Apply Row Level Security (RLS).
PRO16	Integrate the Personal data policy.
PRO17	Label on data sensitivity.
PRO18	Embed Power BI content to MS Teams.
PRO19	Embed Power BI content to SharePoint Online.
PRO21	Defining metadata for BI Artifact.
PRO25	Workspace owner assignment.
PRO31	Data & model profiling.

Process description:
Please select one process in the list above, to see it's description.



Solutions

All

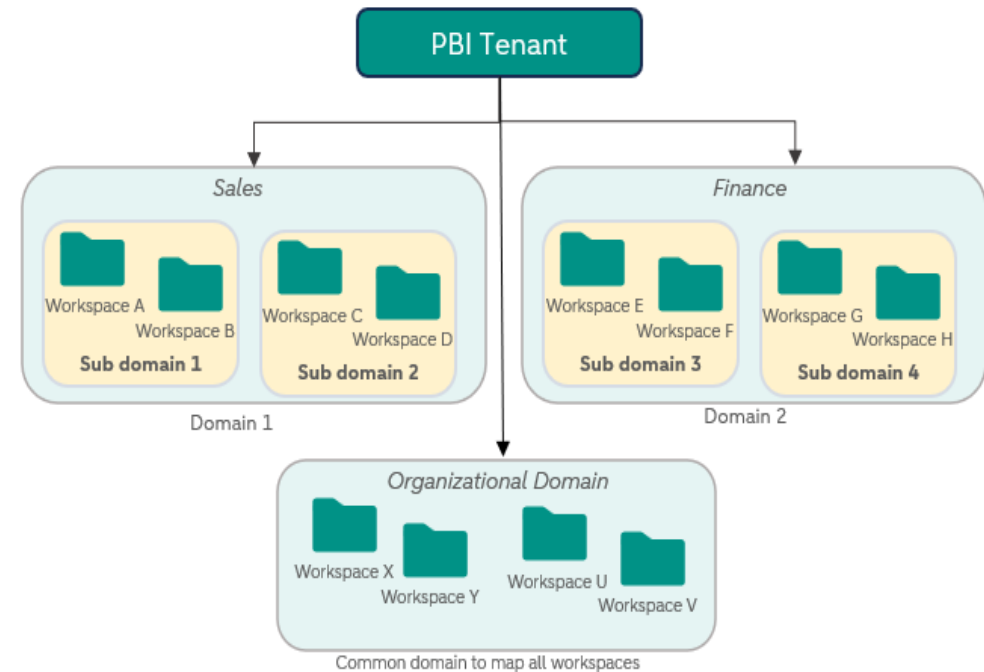
Id	Solution
SOL02	Power BI Desktop
SOL03	Power BI for External & Subsidiaries
SOL05	PowerBI Pro license
SOL06	DIAL data consumption
SOL08	Certified Custom visuals
SOL11	Power BI Premium workspace
SOL16	DRLS
SOL20	Sensitivity labels
SOL21	PowerBI in Sharepoint
SOL25	ABN Amro PBI Template
SOL26	Workspace Owner Report
SOL28	BI endorsement
SOL31	Power BI Enterprise Gateway
SOL33	Data refresh Strategy
SOL35	Power BI Tenant Settings

Solution desc:
Please select one solution in the list above, to see it's status and description.



Introductie BI Domeinen om BI Governance te verhogen

- Een **domein** biedt een manier om meerdere werkruimten met vergelijkbare kenmerken logisch te categoriseren.
- Domeinen en subdomeinen worden gedefinieerd samen met **domeineigenaren en -beheerders** die werkruimten logisch kunnen groeperen onder subdomeinen.
- Domeinen bieden een beheergrens tussen tenantbeheerders en domeinbeheerders voor een betere **controle, eigendom en overzicht** van werkruimten.
- Elke werkruimte kan aan slechts één domein worden toegewezen, wat **duidelijkheid** in eigendom, expertise in het gegevensdomein en **governance** bevordert.





Power BI Community

- Meer dan **2.250 leden**, het is één van de meest actieve communities binnen de bank
- Verschillende kanalen waar **support-vragen** gesteld en beantwoord worden door de community
- Community events, zoals de **PBI Gathering**, de **Power Boosting Inspirations** en **DAX Trainingen**
- Iedere dondermiddag zijn er **BIEB Walk-in-sessies**





BI Quality Feedback Engine



Quality Feedback Engine Scan Report

Powered by BI Enabling Block

Report Last refresh date:

07/12/2024

Purpose of this report:

For our Power BI content **Creators**, the BI Quality Feedback Engine is a solution that **guides** you through applied best **practices** and provides feedback to **improve** the quality of datasets and Power BI **skills**, which results in a more stable Power BI Platform.

[Read more...](#)



Click Play to view Report





Power BI Content Cleaner

SharePoint Zoeken op deze site

Power BI Community Openbare groep

Start Personas BI&B Solutions Wiki Request Catalog Teams channel Q&A Prullenbak Bewerken

+ Nieuw Verzenden naar Promoveren Details voor de pagina Insluitende lezer Analyse Gepubliceerd op 27-10-2022 Bewerken

Power BI Content Cleaner

Bhawna Mohit Chandra

PBI Content Cleaner

The Power BI content cleaner is a solution that will keep the Power BI environment clean with only active and used content. This solution will automatically archive inactive content to cold storage and clean up the Power BI environment.

The aim of this solution is to keep the Bank's BI environment clean and organized. Hence all the reports in the Power BI Premium Tenant will be scanned on a periodic basis to archive the inactive content & retain the active content. Content Cleaner will be executed on a periodic basis throughout the year.

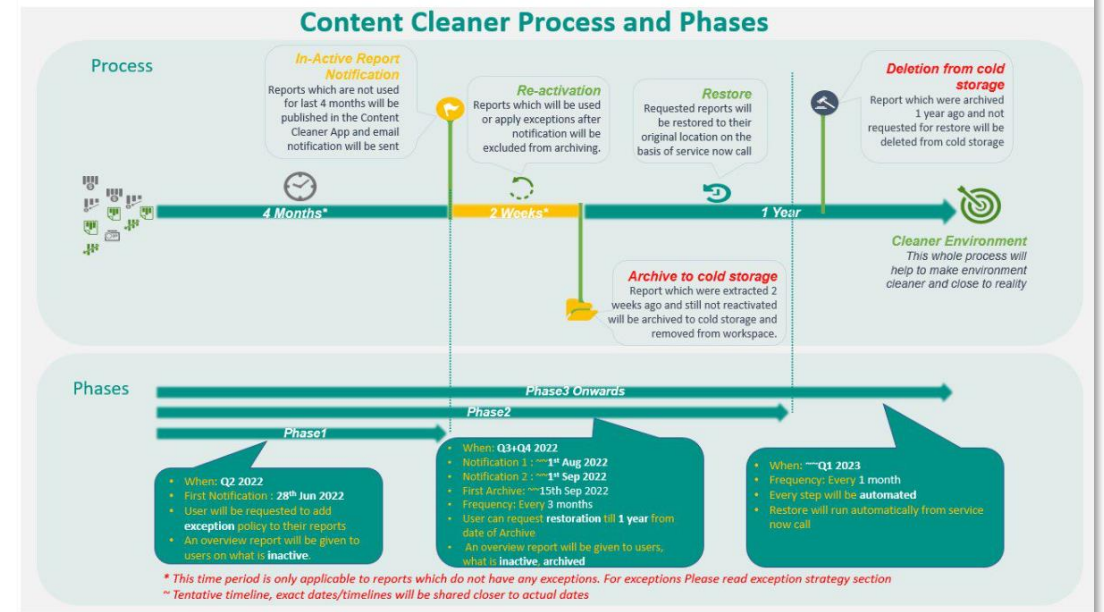
Cleaning and organizing is a practice, not a project.

How this solution would Work?

- Once the Content Cleaner solution is executed, it will generate the list of all the reports which are not used (inactive) from last 4 months or more.
- All such reports will be entitled as "inactive content" and this information will be shared in a report with the Power BI Workspace Admins via email.
- Reports which are used on a periodic frequency may seek an exemption as per [Exception Policy](#).
- All the other inactive Content will be archived and cleaned up from Power BI service.
- There is also possibility of restoring your reports by using [Content Cleaner Restoration Process](#).

Content Cleaner Process Flow

Below we explain how the process looks like in a pictorial view, along with stepwise explanation.






CHRTS Assistant

What do you want to show?

Let the CHRTS Assistant help, guide and inspire you...




C 

Categorical

Comparing categories and distribution of quantitative values


[See more](#)

H 

Hierarchical

Reveiling part-to-whole relationships and hierarchies


[See more](#)

R 

Relational

Exploring correlations and connections


[See more](#)

T 

Temporal

Plotting trends and intervals over time

[See more](#)

S 

Spatial

Mapping spatial patterns through overlays and distortions

[See more](#)

Source CHRTS: Book "Data Visualisation, A Handbook for Data Driven Design (2nd edition, 2019)" by Andy Kirk





CHRTS Assistant

C Categorical

Comparing categories and distribution of quantitative values

The C is all about showing your users a comparison of values between different categories. If you draw two rectangles that are equally wide and then place them close to each other you automatically compare them. You compare the lengths and can easily recognize the differences.

Comparing categories is about being able to see the differences between values, without having to think about it.

Bar chart

Lemon	147,775
Ivy Berries	140,154
Coconut	112,411
Cherry	84,559
Raspberry	66,442

Lollipop Bar Chart

Lemon	147,796
Ivy Berries	140,156
Coconut	112,416
Cherry	84,564
Raspberry	66,446

Lipstick Bar Chart

Lemon	147,796
Ivy Berries	140,156
Coconut	112,416
Cherry	84,564
Raspberry	66,446

Stacked Bar chart

Cherry	84,559
Coconut	112,411
Plum	140,154
Raspberry	66,442

SMART KPI List

Trend	Fruit Lines	Amount	Amount vs Target	Target	Variance %
Cherry	Cherry	2,856	2,844	2,844	0%
Coconut	Coconut	3,864	3,843	3,843	0%
Ivy Berries	Ivy Berries	4,708	4,706	4,706	0%

Waterfall

200K	192	203	188	11,301	68,013	10,719
------	-----	-----	-----	--------	--------	--------

Strip Plot

Coconut
Plum
Raspberry
Cherry

H Hierarchical

Breaking part-to-whole into categories and functions

The H is all about showing data as part-to-whole, data in a hierarchy and the combination of both. A part-to-whole chart shows how the individual parts relate to the total.

This page also contains visuals that can be used to visualise hierarchical data, this is data that displays hierarchical relationships across multiple levels of categorical dimensions

Besides these two separate types, you can combine the part-to-whole and a hierarchy in a visual.

Pie chart

Lemon	147,775 (27%)
Raspberry	66,442 (12%)
Cherry	84,559 (15%)
Coconut	112,411 (20%)
Ivy Berries	140,154 (25%)

Treemap

Lemon	147,775
Ivy Berries	140,154
Cherry	84,559
Raspberry	66,442

Sunburst

Cherry
Coconut
Ivy Berries
Lemon
Raspberry

Decomposition Tree

Fruit Lines	Country	Fruit Department
Lemon	Netherlands	Lemon
Lemon	Netherlands	Lemon
Ivy Berries	Netherlands	Ivy Berries
Ivy Berries	Netherlands	Ivy Berries
Coconut	Belgium	Coconut
Coconut	Belgium	Coconut
Cherry	United Kingdom	Cherry
Cherry	United Kingdom	Cherry

100% Stacked Bar chart

Cherry	100%
Coconut	100%
Ivy Berries	100%
Lemon	100%
Raspberry	100%

R Relational

Linking categories and dimensions

The visuals in the R category can help people to understand how two or more things are related (or not), by showing two (or three) different measures or categories in one visual.

These kind of charts became famous by the Swedish academic Hans Rosling and his colleagues from Gapminder with their famous bubble chart on World's Life expectancy and Wealth analysis.

Scatterplot

Cherry
Ivy Berries
Coconut
Lemon
Raspberry

Bubble chart

Cherry
Ivy Berries
Coconut
Lemon
Raspberry

Merged Bar chart

Amount	Rate	Value
Lemon		
Ivy Berries		
Coconut		
Cherry		
Raspberry		

Sankey

Cherry
Coconut
Ivy Berries
Lemon
Raspberry

Belgium
France
Germany
Netherlands
United Kingdom
Denmark
Norway
Sweden

Chord

Cherry
Coconut
Ivy Berries
Lemon
Raspberry

Network diagram

Cherry
Coconut
Ivy Berries
Lemon
Raspberry

T Temporal

Showing trends and patterns over time

The T is for situations in which you want to show how important time is regarding to the data.

In contrast to bars, which emphasize values, lines emphasize continuity and flow from one value to the next. The horizontal axis is associated with time, just as a metaphorical linear stretches over the horizon. Lines are best used to display continuous data series over a period of time. Lines are suited for showing trend, acceleration or deceleration and volatility, including sudden peaks or troughs.

Line chart

Cherry
Coconut
Ivy Berries
Lemon
Raspberry

Area chart

Cherry
Coconut
Ivy Berries
Lemon
Raspberry

CyclePlot

Cherry
Coconut
Ivy Berries
Lemon
Raspberry

Column chart with highlighted last period

Cherry
Coconut
Ivy Berries
Lemon
Raspberry

S Spatial

Mapping spatial patterns through overlays and distributions

When location is relevant for your message, you can decide to use a spatial visualisation. The most common type is a geographical map, like a city, a country, a region or even the world. Have you ever thought of visualising a building, a floor or a room? These objects also contain locations and can also be used in this category.

When working with locational data, your instinct may be to create a map. But take a moment to consider: Is a map the best way to present your data? Does the reader need to see the exact differences between data values? If your answer is 'yes', perhaps it is better to choose another visual. You could think of a C category visual.

Shape Map

United States

SVG Map

United States

Bubble Map

United States

Heat Map

UNITED STATES



Workspace management

Workspace insights



- Inzicht in workspaces, rollen, of ze PRO lic hebben
- Semantische modellen (aantallen, gebruik, permissies) laadtijden, bronnen
- Het gebruik van rapporten
- WENS: meer detail inzicht van gebruik rapporten

Tenant settings & monitoring



- Monitoren van nieuwe features
- Controleerbaar beschikbaar stellen van nieuwe features
- Monitoren van capaciteit performance

Health checks



- Sensitieve semantic models zonder RLS
- Relevante workspace rollen zonder PRO licentie
- Semantic models met lange refresh doorlooptijd
- Workspaces met te veel admins
- Artifacts waar toegang is verleend aan de gehele organisatie

5

De lessen die wij hebben geleerd

De lessen die wij hebben geleerd

Opzetten van een BI Community



1. Kennis en ervaringen delen
2. Probleemoplossing
3. Continue leren en inspireren

Train je gebruikers



1. Verbetering van de kwaliteit van oplossingen en innovatie
2. Gelijke tred houden met technologische vooruitgang,
3. Productiviteit en efficiëntie verhogen

Onderhoud van het platform



1. Betrouwbaarheid en prestaties garanderen
2. Beveiliging en naleving
3. Ondersteuning van schaalbaarheid en groei
4. Beoordelen nieuwe features

Zijn er nog vragen



Session Feedback



Event Feedback



DANKE!

THANK YOU!

MERCI!

GRAZIE!

GRACIAS!

DANK JE WEL!

